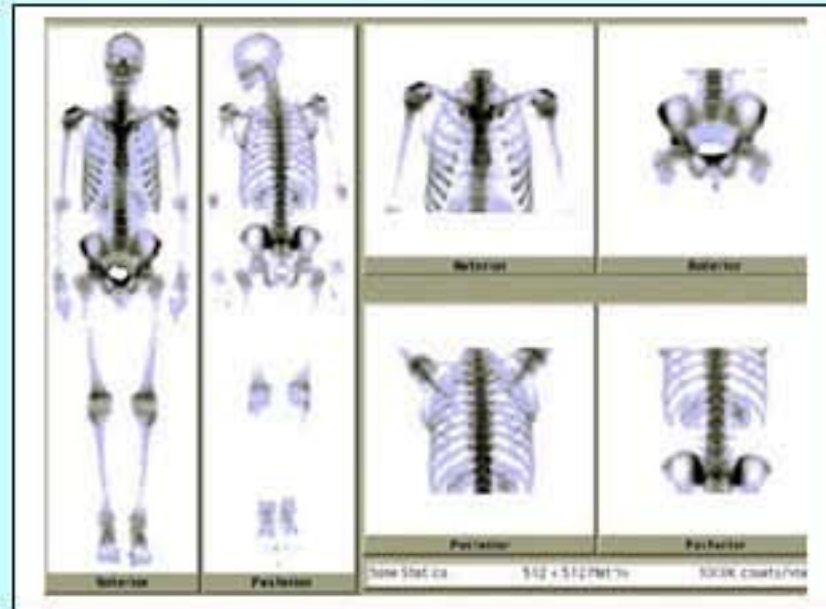




Kingdom of Saudi Arabia  
National Guard Health Affairs  
King Abdulaziz Medical city  
Medical Imaging Department

## Nuclear Medicine Section

### Bone Scan



For a bone scan, a radioactive substance is injected into a vein in your arm. This substance, called a tracer, travels through your bloodstream and into your bones. This could take several hours. A special camera takes pictures of the tracer in your bones.

### Why we do bone scan?

- 1) Find bone cancer.
- 2) Diagnose broken bones.
- 3) Infection
- 4) Diagnose the cause or location of unexplained bone pain.

### General Instructions:



- ✓ - Patient **SHOULD** bring his medical card at each visit in order to avoid cancellation.
- ✓ - If you cannot attend the appointment please contact us at least one day before the date of the exam, therefore you will be serving another patient on the waiting list, and you'll get an early date that is suitable for you.
- ✓ -For appointment change or cancellation, please contact the Tel: 8011111 Ex: 11896 or Ex: 13467.
- ✓ -Your appointment will be canceled automatically in case of No-Show on the specific time.
- ✓ -The presence of more than one companion with the patient is not allowed in the waiting area **NOR** the scanning room.

### **Before the scan, tell your doctor if:**

- You are or might be pregnant.
- You are breastfeeding; You will need to use formula (throw out your breast milk) for 1 to 2 days after the scan until the radioactive tracer is gone from your body.

### **You will be asked to:**

- 1- Drink extra fluids after the tracer is injected.
- 2- You probably will have to wait 1 to 3 hours after the tracer is injected before your bone scan is done.
- 3- Remove any jewelry that might get in the way of the scan.
- 4- Just before the scan begins, you will be asked to empty your bladder to prevent any radioactive urine from blocking the view.



### **Imaging**

- 1- You will lie on your back on a table, and a large scanning camera will be above you.
- 2- A bone scan takes about 1 hour.
- 3- You may feel nothing at all from the needle when the tracer is injected.



### **Results**

The results of a bone scan are usually available within 2 days.