



Kingdom of Saudi Arabia
National Guard Health Affairs
King Abdulaziz Medical city
Medical Imaging Department

Nuclear Medicine Section Renogram



Renal evaluation using radionuclides can provide information on renal function and anatomy. After injection into the venous system, the compound is excreted by the kidneys and its progress through the renal system can be tracked with a gamma camera

General Instructions:



- ✓ - Patient **SHOULD** bring his medical card at each visit in order to avoid cancellation.
- ✓ - If you cannot attend the appointment please contact us at least one day before the date of the exam, therefore you will be serving another patient on the waiting list, and you'll get an early date that is suitable for you.
- ✓ -For appointment change or cancellation, please contact the Tel: 8011111 Ex:11896 or Ex:13467.
- ✓ -Your appointment will be canceled automatically in case of No-Show on the specific time.
- ✓ -The presence of more than one companion with the patient is not allowed in the waiting area **NOR** the scanning room.

Indication

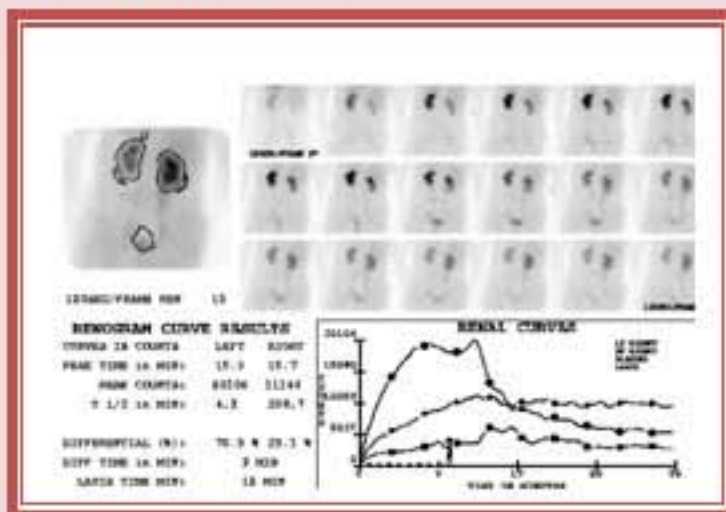
- 1- The glomerular filtration rate (GFR) and the renal plasma flow (RPF) are two quantities used to assess renal function.
- 2- Evaluate the transplant kidney.
- 3- Detect and evaluate hydronephrosis.
- 4- Detect and evaluate obstruction in the renal collecting system.
- 5- Evaluate renal trauma.

Before the scan, tell your doctor if:

- you are or might be pregnant.
- you are breastfeeding, You will need to use formula (throw out your breast milk) for 1 to 2 days after the scan until the radioactive tracer is gone from your body.

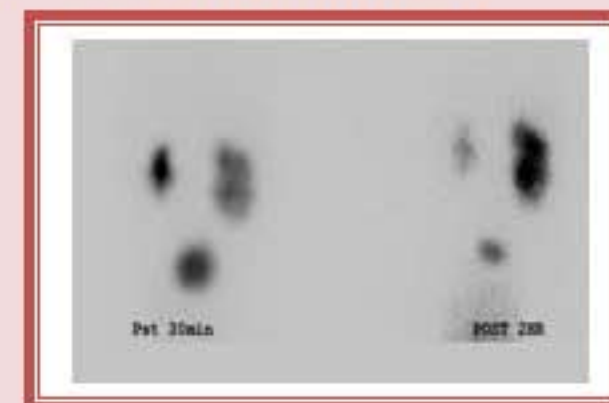
Preparation:

Patient should only drink a lot of water one hour before the exam.



Procedure

- 1- To start the scan, the technologist will position you on a flat table close to the gamma camera.
- 2- The gamma camera will be very close to you to obtain the best picture.



- 3- After you are in position, the technologist will inject the radionuclide in your vein and immediately begin taking rapid pictures.
- 4- It takes time around 40-60min.
- 5- You should not move during the exam.

Result:

It is usually available within 2 days

